

Referans istasyonu alıcısı olarak;
TOPCON NET-G5 GNSS sabit istasyon alıcısı ve CR-G5 Choocring Anten
TOPCON G3-A1 Jeodezik Anten kullanılmaktadır.



NET-G5 Donanım Özellikleri

Kanal Sayısı	: 452 Üniversal kanal
İzlenen Sinyaller:	<ul style="list-style-type: none">• GPS L1,L2&L5* taşıyıcı, CA,L1 P,L2 P,L2C• GLONASS L1,L2&L5* taşıyıcı,L1CA,L2CA,L1P, L2P• GALILEO , BEIDOU, QZSS, EGNOS
Statik hassasiyeti	: H: 3mm + 0.1 ppm V: 3.5mm+ 0.4 ppm
Rtk hassasiyeti	: H: 10mm + 1 ppm V: 15mm+ 1 ppm
Güncelleme hızı	: 1-100 Hz seçilebilir
Hafıza	: Çıkartılabilir SD Card
Data Çıkış Formatları	: TPS, RTCMSC104 2.1, 2.2, 2.3 ve 3.X, CMR, CMR+, BINEX
ASCII çıkış	: NMEA 0183 versiyon 2.1, 2.2, 2.3 ve 3.x
Diğer sinyaller	: 1 pps, Event Marker, Harici Frekans girişi, 20 Mhz Frekans çıkışı
Port Sayısı	: 3 Serial, 1 USB, 2 Power, 1 Ethernet (POE)
Bağlantı	: wi-fi ve Bluetooth
HTML Web Arayüzü	: Explorer, Firefox, and Opera
Güç Özellikleri	: 2 adet güç girişi , 2 adet lityum-İon dahili batarya
Çevresel Özellikleri	: Alüminyum alaşımlı kasa, IP67 su toz geçirmezliği, MIL-STD 810G
Çalışma Sıcaklığı	: -40 °C ile + 80 °C

TopNET-V
Setup View Help

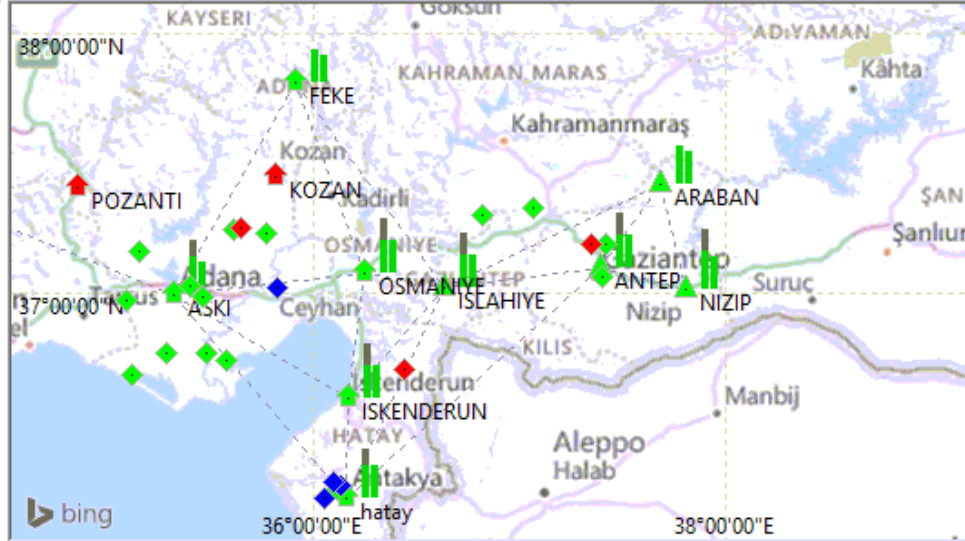
Reference station	4-C...	G...	Sta...	Last Epoch	SVs ...	Pos. C
▲ GOLBASI	GLBS	ABB	OK	1821:6 10:17:20	14+8	Stand
▲ AKYURT	AKYT	ABB	OK	1821:6 10:17:20	11+6	Stand
▲ YENİKENT	YNKT	ABB	OK	1821:6 10:17:20	12+8	Stand
▲ NALLIHAN	NLHN	ABB	OK	1821:6 10:17:20	10+6	Stand
▲ BALA	BALA	ABB	OK	1821:6 10:17:20	11+7	Stand
▲ BEYPAZARI	BYPZ	ABB	OK	1821:6 10:17:20	11+8	Stand
▲ POLATLI	PLTL	ABB	OK	1821:6 10:17:20	12+7	Stand
▲ SEREFLIKOCHISAR	SKCH	ABB	OK	1821:6 10:17:20	11+7	Stand
▲ YENICE	YENI	ABB	OK	1821:6 10:17:20	12+6	Stand
▲ KIZILCAHAMAM	KCHM	ABB	OK	1821:6 10:17:20	9+7	Stand

Rover ID	Mountpoint (P...	Service	Quality	Position	Distance t...	SVs Sent	Bytes Sent	IP Address	Ntrip User	Duratio
▲ 1206-084522	1ANSAGA_VRS	Network RTK	RTK fixed	38°55'48.5120"N 33°32'45.5908"E 976.0567	463	8+6	1281838	188.57.180.119	belbeton5	1h31m16
▲ 1206-085128	1ANSAGA_VRS	Network RTK	RTK fixed	39°59'09.6595"N 32°38'32.0579"E 862.5215	328	8+6	1202176	178.241.97.75	cevre1	1h25m32
◆ 1206-085331	1ANSAGA_VRS	Network RTK	RTK float	39°54'00.9032"N 32°45'05.7325"E 931.0680	1128	8+6	1166203	176.239.55.139	yenikbharita	1h23m17
▲ 1206-092952	2ANSAGA_RTK	RTK[Auto]	RTK fixed	39°57'42.1530"N 32°14'40.7096"E 1173.5...	24351	12+8	812280	176.55.212.112	yolgecici3	46m42
▲ 1206-093457	1ANSAGA_VRS	Network RTK	RTK fixed	39°43'05.4545"N 32°00'15.3265"E 736.6673	497	8+6	578003	188.57.240.213	irakarita1	42m31
▲ 1206-093764	1ANSAGA_VRS	Network RTK	RTK fixed	39°53'41.9492"N 32°37'31.6948"E 981.1933	171	8+6	529386	176.239.98.76	belbeton4	38m59
◆ 1206-095379	1ANSAGA_VRS	Network RTK	Standalone	39°59'15.6433"N 32°53'45.1920"E 883.4464	1633	8+6	313131	178.241.122.30	koren2	23m26
▲ 1206-100986	1ANSAGA_VRS	Network RTK	RTK fixed	39°57'39.3616"N 32°14'30.7116"E 1155.5...	199	8+6	104414	176.219.149.104	yolgecici11	7m37

06.12.2014 12:15:04 Rover: 1206-101087. Disconnected after 4m50s

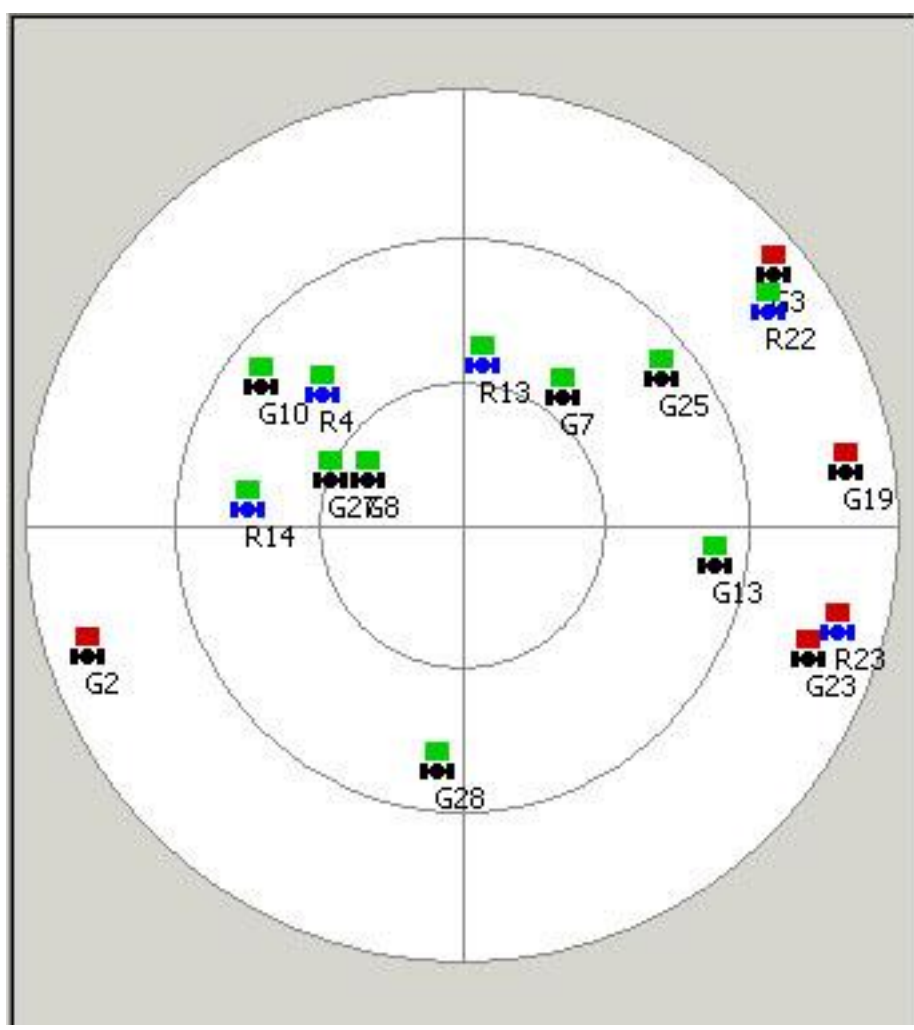
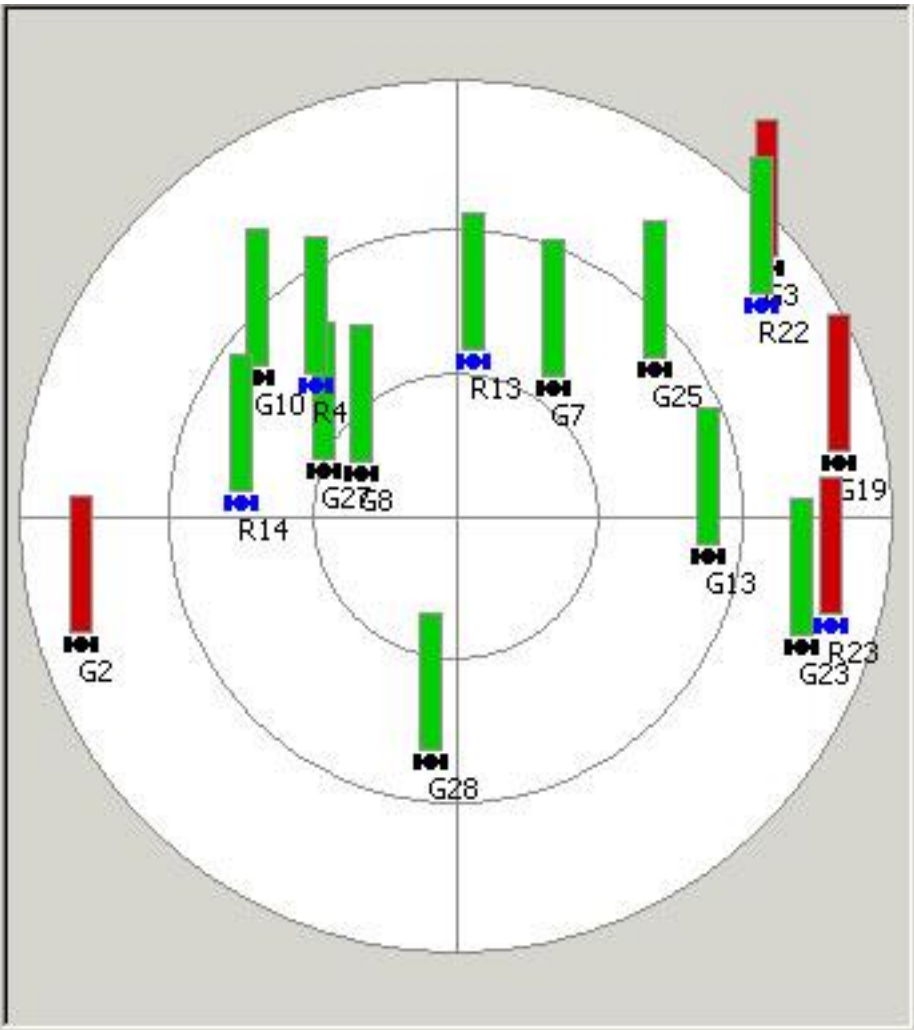
Rovers: 8 Ref.Stations: 10/10 Leap Seconds: 16 PC Time as GPS: 1821:6 10:16:57

Reference Stati	4-cha...	Group	S...	SVs	Last Epoch	Pos. Qual.
▲ ANTEP	ANTP	ADANA	Ante...	10G+6R	2008:2 08:27:05	Precise
▲ ARABAN	ARBN	ADANA	Ante...	10G+6R	2008:2 08:27:05	Precise
▲ ISLAHIYE	ISLH	ADANA	Ante...	10G+6R	2008:2 08:27:05	Precise
▲ NIZIP	NIZP	ADANA	Ante...	11G+6R	2008:2 08:27:05	Precise
▲ ASKI	ASKI	ADANA	OK	10G+6R	2008:2 08:27:05	Standalone
▲ EREGLI	ERGL	ADANA	OK	11G+6R	2008:2 08:27:05	Standalone
▲ FEKE	FEKE	ADANA	OK	6G+5R	2008:2 08:27:05	Standalone
▲ ISKENDERUN	ISKD	ADANA	OK	10G+6R	2008:2 08:27:05	Standalone
▲ OSMANIYE	OSMA	ADANA	OK	10G+6R	2008:2 08:27:05	Standalone
▲ hatay	HATA	ADANA	OK	9G+6R	2008:2 08:27:05	Standalone
▲ KOZAN	KOZN	ADANA	Offline			
▲ POZANTI	PZNT	ADANA	Offline			



Rover ID	Mountpoint (Port #)	Service	Quality	Position	GGA...	Dist...	SVs S	Bytes ...	IP Address	Ntrip User	Duration
◆ 0703-032318-325	1ADANA_VRS	Network RTK	RTK fixed	36°46'02...	4s	1638	7G+6R	4226840	178.246.18.136	eker	5h03m27s
◆ 0703-034029-327	1ADANA_VRS	Network RTK	RTK fixed	36°46'24...	6s	194	7G+6R	3956171	178.246.52.24	serkan	4h46m16s
◆ 0703-044913-332	1ADANA_VRS	Network RTK	RTK fixed	36°58'39...	7s	335	7G+6R	2980604	178.246.15.4	mpehlivan	3h37m32s
◆ 0703-053237-347	1ADANA_VRS	Network RTK	RTK fixed	37°18'11...	9s	1443	6G+6R	2354022	178.247.2.105	gorpa13	2h54m08s
◆ 0703-061416-363	1ADANA_VRS	Network RTK	RTK fixed	36°41'10...	7s	253	7G+6R	1774811	5.24.2.64	yilmazt	2h12m29s
◆ 0703-061601-364	1ADANA_VRS	Network RTK	RTK fixed	37°19'59...	1s	1249	6G+6R	1721745	176.239.87.11	tercan3	2h10m44s
◆ 0703-071327-415	1ADANA_VRS	Network RTK	RTK fixed	37°13'53...	5s	694	6G+6R	967584	178.241.151.100	erdincataklar	1h13m18s
◆ 0703-072815-425	1ADANA_VRS	Network RTK	RTK fixed	36°59'21...	10s	76	7G+6R	769086	178.246.115.59	muratkarli	58m30s
◆ 0703-072920-427	1ADANA_VRS	Network RTK	RTK fixed	37°18'18...	4s	1012	6G+6R	754488	5.24.134.18	gorpatarim1	57m25s
◆ 0703-074925-445	1ADANA_VRS	Network RTK	RTK float	37°01'36...	5s	867	6G+6R	494285	5.24.19.30	aski15a	37m20s
◆ 0703-075044-449	1ADANA_VRS	Network RTK	RTK fixed	37°11'36...	5s	26	6G+6R	473713	178.246.58.186	tabak27	36m01s
◆ 0703-075400-458	1ADANA_VRS	Network RTK	RTK float	36°15'27...	5s	9.4	6G+6R	431222	178.246.91.65	hmfabel1	32m45s
◆ 0703-075719-460	1ADANA_VRS	Network RTK	RTK fixed	36°14'18...	4s	67	6G+6R	387798	178.246.111.183	fen6	29m26s
◆ 0703-075822-465	1ADANA_VRS	Network RTK	RTK fixed	37°14'47...	5s	581	7G+6R	373829	178.246.79.220	adanadsi	28m23s

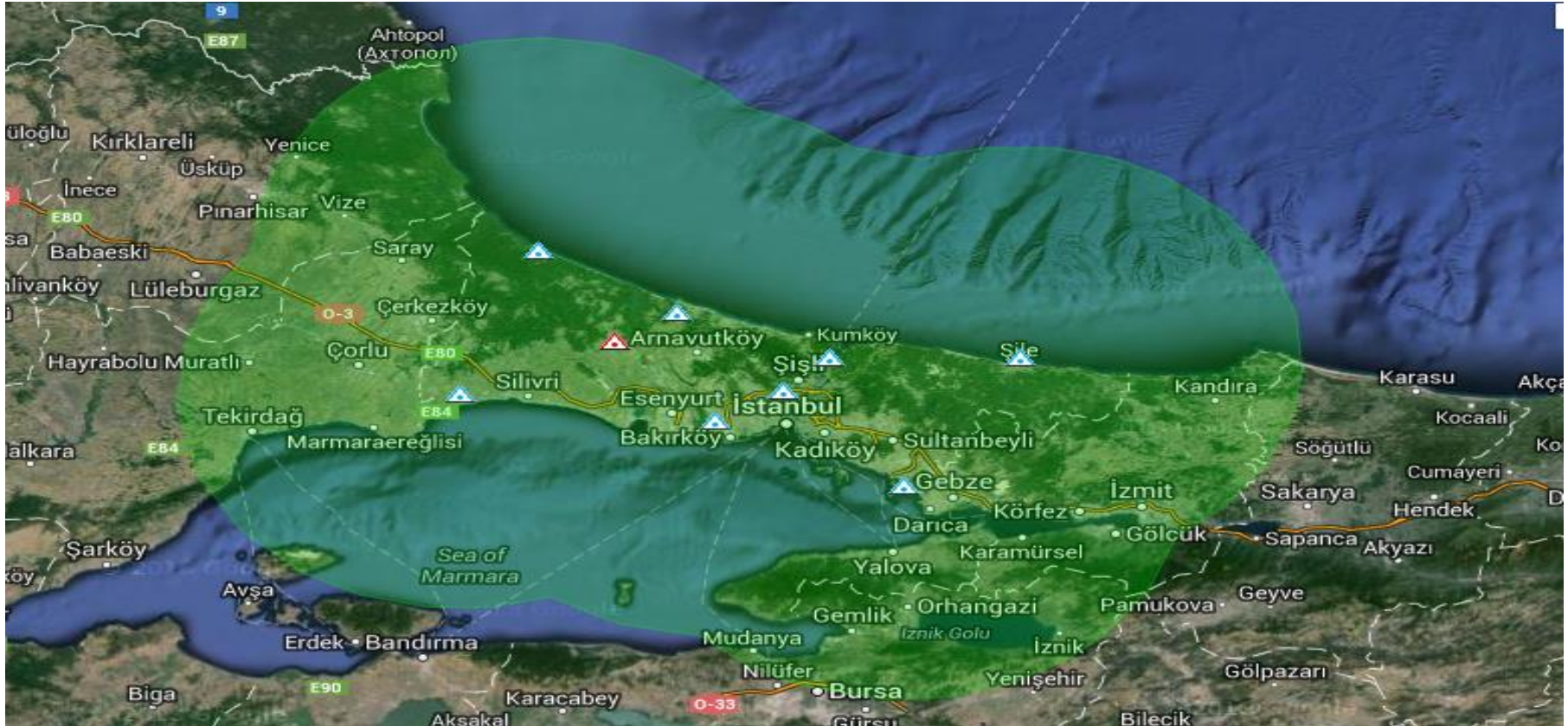
7/3/2018 11:26:11 Ref. Station: KOZAN. Failed to connect. Failed to connect to the receiver.













TOPNETLive Web Arayüzü ile Sistem Takibi









- TopnetLive web module ile anlık olarak Sabit ağıınız takip edebilirsiniz.
- Referans istasyonların online yada offline olduğu takip edilebilirsiniz.
- Sisteme kullanıcı kaydı açabilir, kullanıcıları ayrı ayrı gruplandırabilirsiniz.
- Kayıtlı kullanıcıların anlık olarak bağlantıları görebilirsiniz
- Google harita üzerinden nerde çalıştığı ve ne kadar çalıştığı görülebilirsiniz.
- Tüm bağlantıları raporlama yapılabilir. Rapor geçmişinde sistemin, grupların ve kullanıcıların ayrı ayrı raporlamaları alabilirsiniz.
- Kullanıcının ölçü anındaki iz kaydını da görebilirsiniz.
- Kullanıcılara toplu mesaj atabilirsiniz.

Topnet live Referans istasyon görüntüsü

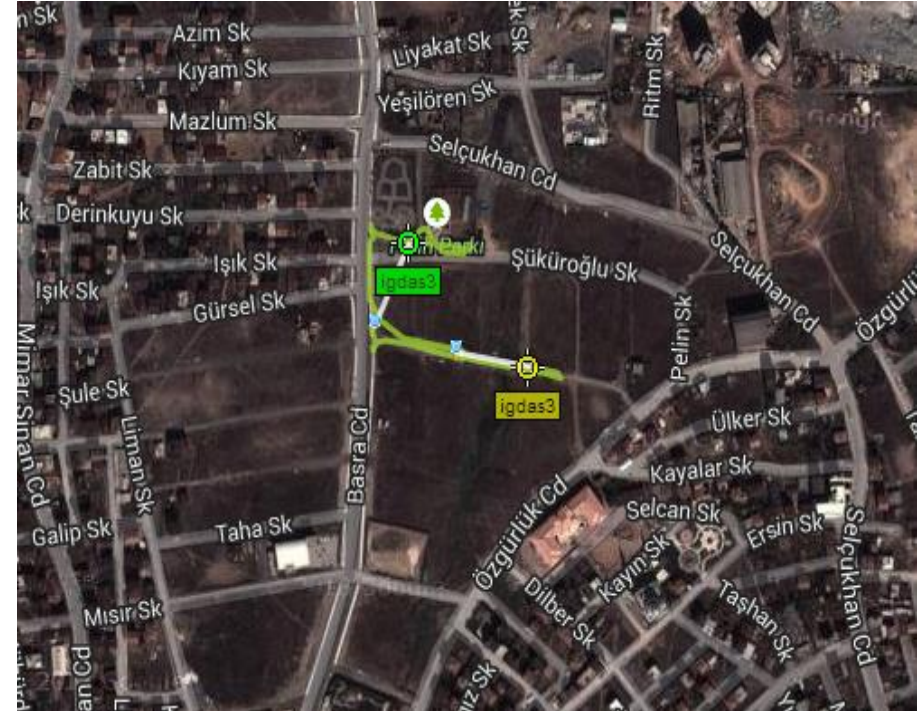
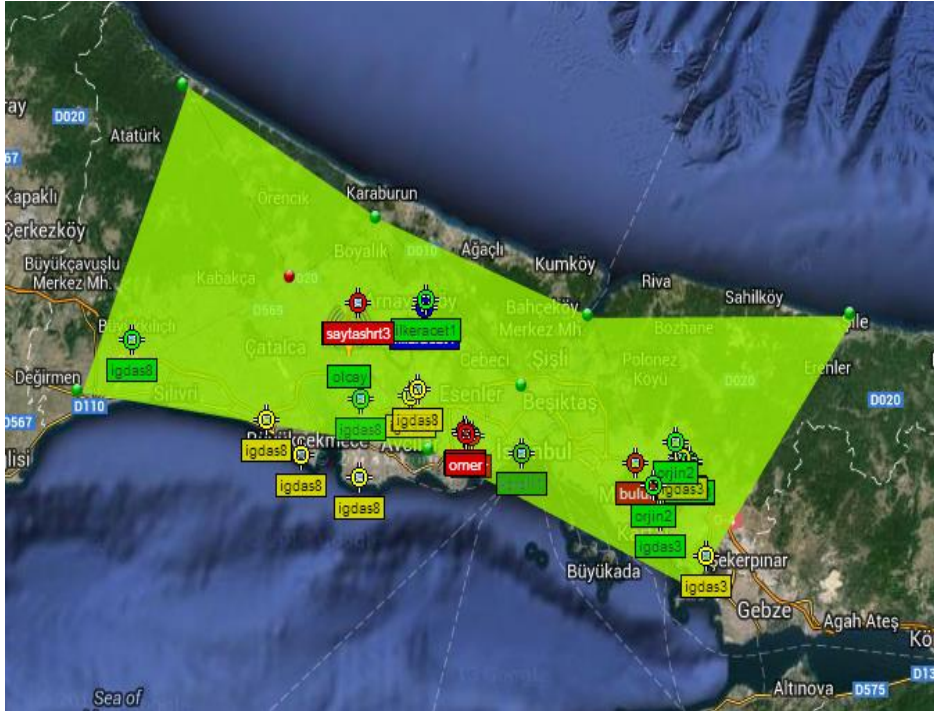


Reference stations list

Flag	Name	Latitude	Longitude	Altitude	
	BEYK	41.17672	29.09352	101.27 m	
	KCEK	41.00275	28.77975	122.92 m	
	KEST	41.22542	28.50401	65.60 m	
	PALA	41.08632	28.96320	170.56 m	
	SILE	41.17900	29.61332	79.64 m	

Flag	Name	Latitude	Longitude	Altitude	
	SLVR	41.08022	28.08340	138.25 m	
	TERK	41.30307	28.67358	48.01 m	
	TUZL	40.82650	29.29245	55.28 m	
	YALI	41.47335	28.29320	86.71 m	

Topnet live Anlık takip görüntüleri



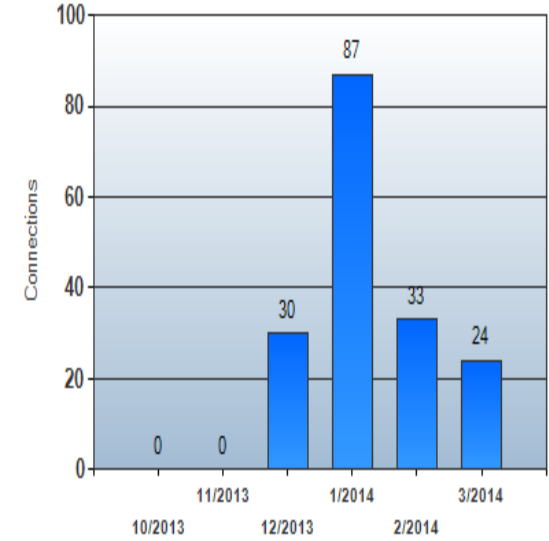
igdas8	41.14819	28.18058	87.402 m		Network RTK	173.1 kB	00:11:49	VRS (0.03 km)	9+7	
igdas8	41.14805	28.18038	86.673 m		Network RTK	87.6 kB	00:06:27	VRS (0.01 km)	9+6	
igdas8	41.0769	28.7329	65.802 m		Network RTK	65.5 kB	00:04:36	VRS (0.02 km)	8+8	
igdas8	41.08463	28.74658	120.812 m		Network RTK	282.8 kB	00:20:02	VRS (0.01 km)	8+6	
ilkeracet1	41.19036	28.76001	121.423 m		Network RTK	121.5 kB	00:09:26	VRS (0 km)	8+7	
ilkeracet1	41.19028	28.75984	119.715 m		Network RTK	142.3 kB	00:11:31	VRS (0.01 km)	7+6	
ilkeracet1	41.19992	28.7628	104.113 m		Network RTK	848.4 kB	00:58:13	VRS (0 km)	9+8	
kordil1	41.00185	28.95193	49.81 m		Network RTK	227.7 kB	00:16:43	VRS (0.08 km)	10+7	
kordil1	41.00217	28.95309	60.474 m		Network RTK	618.6 kB	00:43:26	VRS (0.05 km)	9+7	
kordil1	41.00191	28.95233	56.165 m		Network RTK	1.0 MB	01:14:07	VRS (0 km)	7+7	
kordil1	41.00189	28.95261	40.201 m		Network RTK	256.4 kB	00:19:07	VRS (0.02 km)	9+6	

Topnet live Raporlama görüntüleri

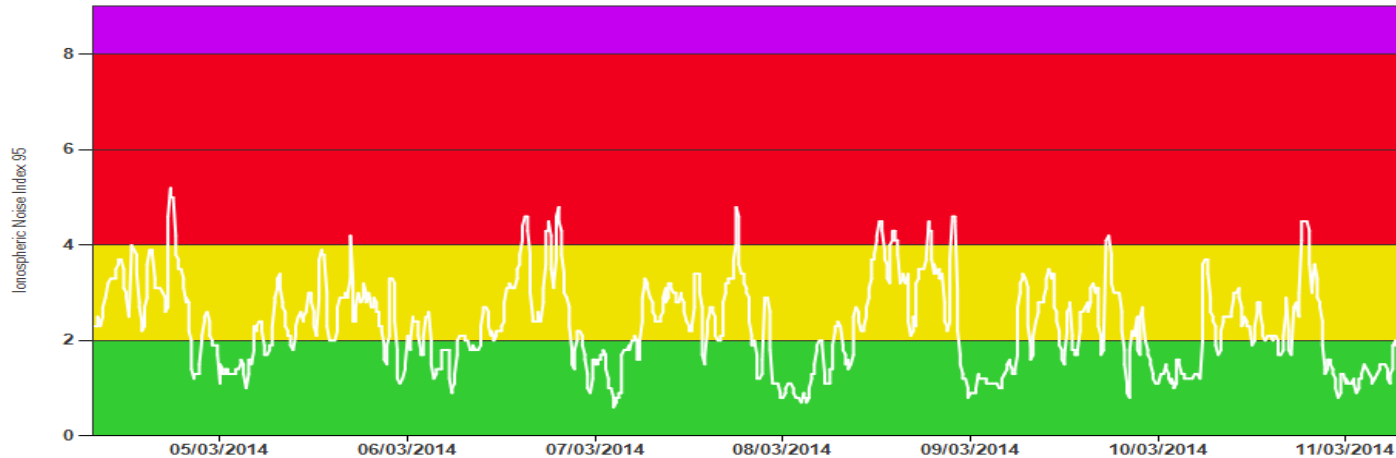
Connections list

Connection time	Quality percentage	Quality chart	Satellites	Distance to ref. st. (km)
Connection from 05/03/2014 15:35:38	RTK fixed: 69.7 %		Min Avg Max	Min Avg Max
Connection to 05/03/2014 15:50:21	DGPS: 30.3 %		GPS: 9 9 9	Distance 0 0.06 0.13
Connection time 00:14:43			Glionass: 6 6 7	
Connection from 06/03/2014 10:44:23	RTK fixed: 93.3 %		Min Avg Max	Min Avg Max
Connection to 06/03/2014 10:49:55	DGPS: 6.7 %		GPS: 9 9 9	Distance 0 0.02 0.04
Connection time 00:05:32			Glionass: 7 7 7	
Connection from 06/03/2014 11:13:45	RTK fixed: 84.6 %		Min Avg Max	Min Avg Max
Connection to 06/03/2014 11:18:28	DGPS: 15.4 %		GPS: 8 8 8	Distance 0 0.03 0.06
Connection time 00:04:43			Glionass: 8 8 8	
Connection from 06/03/2014 11:35:42	RTK fixed: 59.9 %		Min Avg Max	Min Avg Max
Connection to 06/03/2014 11:56:02	DGPS: 38.4 %		GPS: 0 9 9	Distance 0 0.02 0.06
Connection time 00:20:20	Invalid: 1.7 %		Glionass: 0 7 8	

Last 6 months connection progress graph



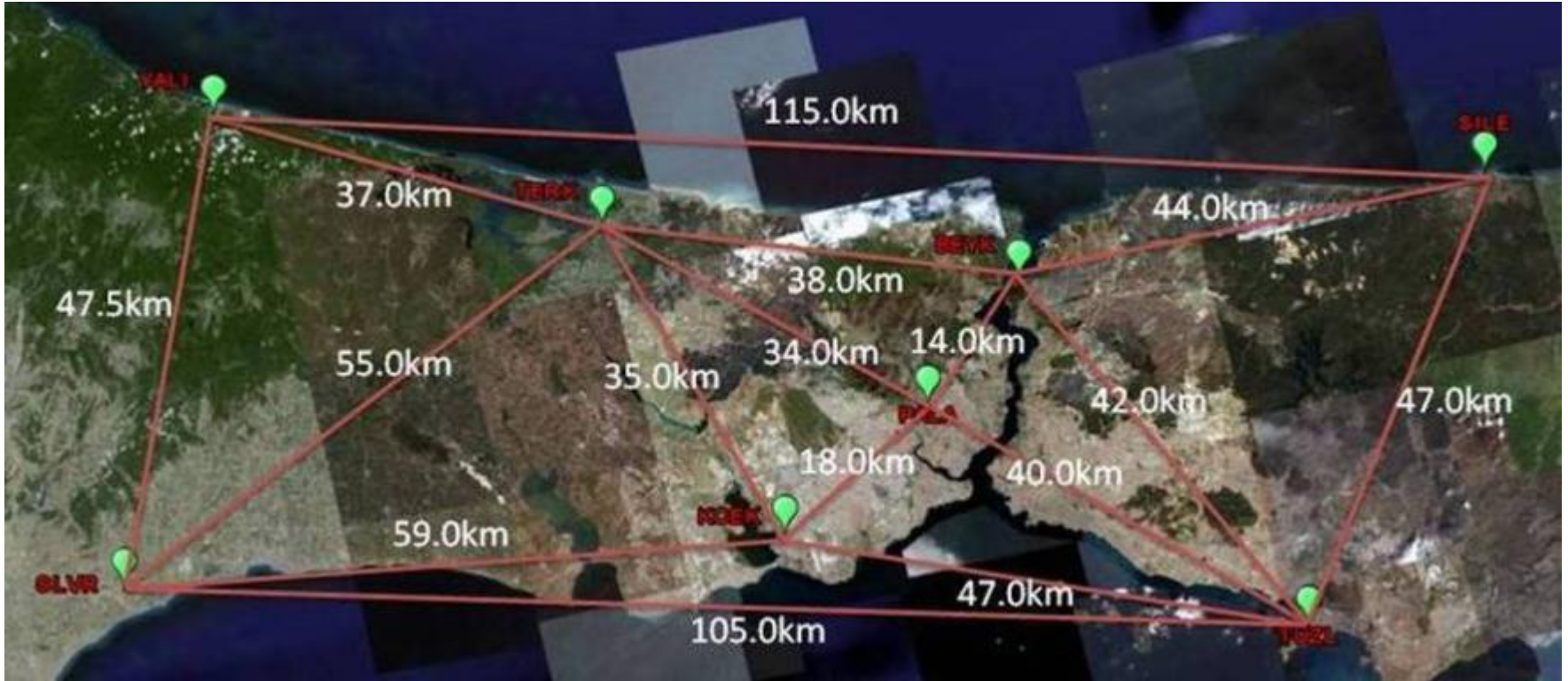
Topnet live iyonesferik düzeltme görüntüleri







AĞ TASARIMI

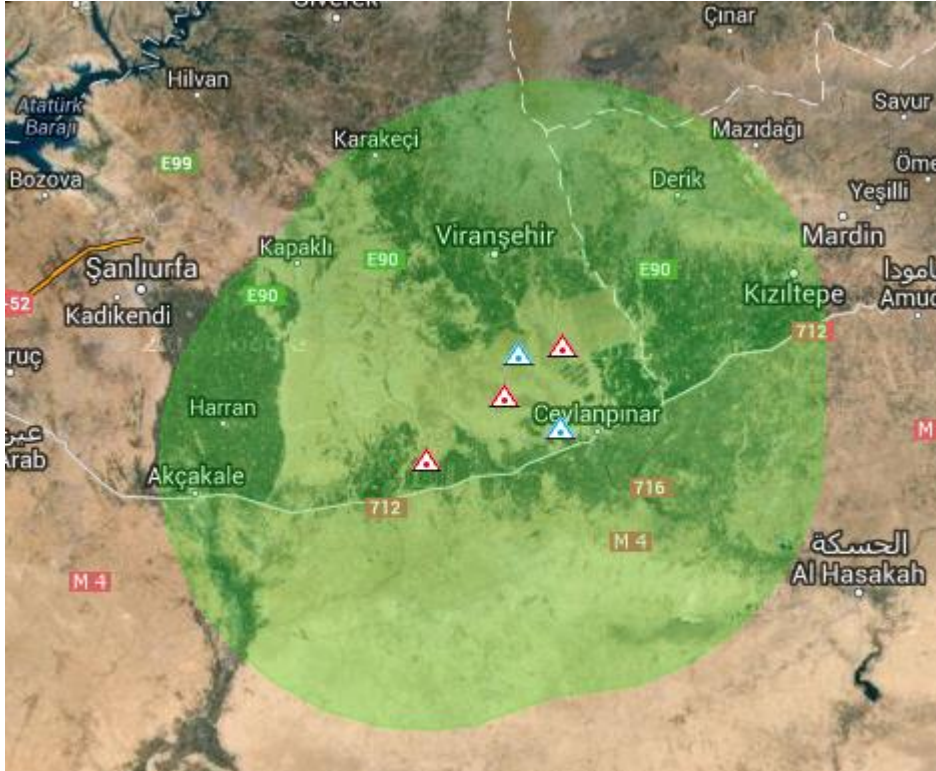


SABİT İSTASYON

TOPCON NETG3-A Alıcısı

TopNet + RTK+VRS lisanslı RS yazılımı

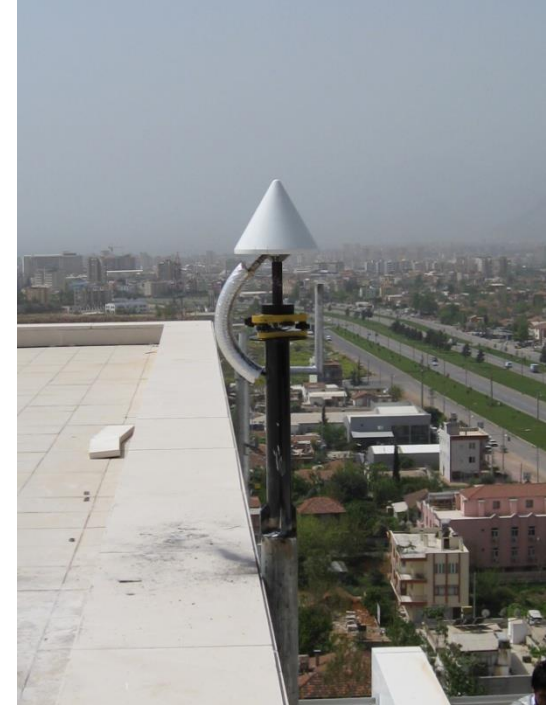
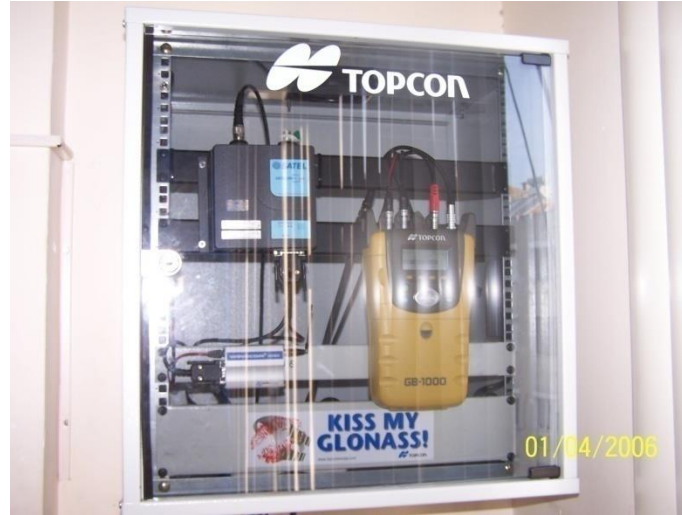
TopnetLive web module lisansı



Topcon GB1000 RS alıcısı Topcon
PG A1 GP Jeodezik anten

GPS+GLONASS

GEO++ GNREF TEK SABİT İSTASYON YAZILIMI



Topcon Net-G3 RS alıcısı Topcon
CR-G3 Chock Ring Anten

GPS+GLONASS

TopNet + RTK+VRS lisanslı RS yazılımı





TOPCON NETG3 Alıcısı



TÜRKİYE DE ÇALIŞAN SABİT REFERANS İSTASYONLARIMIZ

